

MOTOR FIT PRO

SP-1100



SP-2100ER



ISO 9001 : 2008 / DIN EN ISO 13485 : 2012



MEDICAL CARE - SINCE 1996
SUNGDOMC

Product Overview

- A rehabilitation training instrument to make exercise of the upper & lower limbs by motor.
- An exercise function by self-power (passive) is needed.
- A function to operate safely when a spasm happens is basically required – stop automatically, reverse-rotate automatically etc.
- Helps to increase flexibility of the joint and operating range of motion.
- Helps to prevent contraction phenomenon of the muscle and thrombosis.
- Users are those who rehabilitation exercise is required such as SCI, disabled person caused by cerebral apoplexy (paralysis), traffic accident etc, patients of multiple arteriosclerosis, brain damage, poliomyelitis, cerebral palsy and other wheel-chair user and so on.
- Speed control, time control should be involved, and indications of exercise results on the screen is needed.

Product Features

- Screen indication item – Speed, resistance, time, rotating direction etc.
- A function to control spasm.
- Control speed and resistance to set level of the user.
- Exercise is possible forward direction and reverse direction of the pedal.
- Controls exercise time as much as user wants.
- Bio feedback function – Indicates a left side limbs and right side limbs exercise volume by % in active exercise.
- Touch Screen Monitor.
- Adjustment function for pedal position.
- Able to adjust the height of machine for pediatric by pressing the switch actuator.



SP-1100P

Product Specifications

SP-1100



SP-2100



SP-3100



| | | | |
|---|--|-------|-------|
| | | | |
| Dimension | 595 x 695 x 1,190(H)mm | | |
| Monitor Dimension | 150 x 90mm (7" LCD Touch Screen) | | |
| Weight(kg) | 50.65 49.45(US) | 42.50 | 42.50 |
| Power Supply | 110V~220V, 50Hz~60Hz | | |
| Medical Device Manufacturing Article | Exercise Device for Orthopedic A67020(2) | | |
| Other Specifications | Voice Guide Function | | |

Product Specifications



| | | | |
|---|--|-------|-------|
| Dimension | 595 x 695 x 1,190(H)mm | | |
| Monitor Dimension | 550 x 920 x 1,110mm(H) (Segment Monitor) | | |
| Weight(kg) | 50.15 | 41.95 | 41.95 |
| Power Supply | 110V~220V, 50Hz~60Hz | | |
| Medical Device Manufacturing Article | Exercise Device for Orthopedic A67020(2) | | |
| Other Specifications | Voice Guide Function Touch Screen Monitor | | |

Product Specifications



SP-1100P



SP-2100P



SP-3100PE

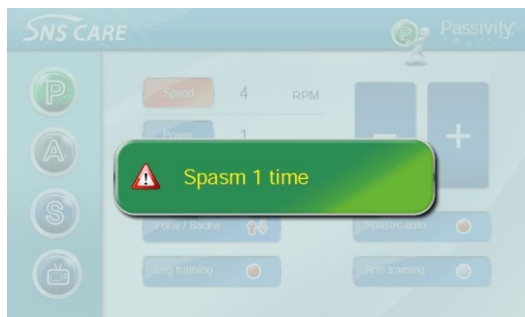
| | | | |
|---|--|-------|---|
| Dimension | 595 x 695 x 1,190(H)mm | | |
| Monitor Dimension | 550 x 920 x 1,110mm(H) (Segment Monitor) | | 550 x 920 x 1,110mm(H) (Segment Monitor) |
| Weight(kg) | 55.25 | 44.30 | 44.30 |
| Power Supply | 110V~220V, 50Hz~60Hz | | |
| Medical Device Manufacturing Article | Exercise Device for Orthopedic A67020(2) | | |
| Other Specifications | Voice Guide Function Touch Screen Monitor | | |

Product Features

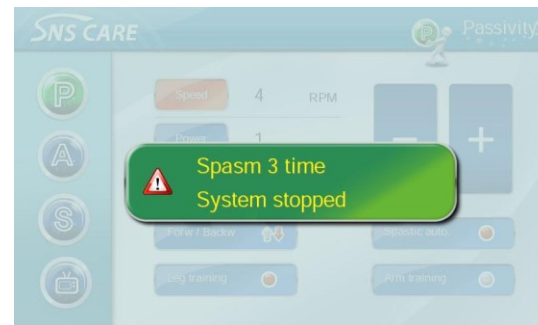
- Spasm Control Function (Spasm Control)

“Since patient cannot relax by oneself when spasm occurs, exercise machine get operated after stop temporarily when spasm occurs, and is a control movement to make the muscle relax by changing the rotation direction“

- Spasm control is possible only on the passive mode.
- Get started exercise after selected spasm mode on the manual mode (spasm control function is a basic set-up).
- When patient causes a spasm during exercise, number of spasm occurrence indicates on the screen.
- Up to one time and two times, rotates automatically in a reverse direction after 3 seconds.
- When it happens three times, system is compulsorily ended for safety of the user.
- Turn off the main power switch and then turn it on again after approx 5 seconds.



< spasm control indication>



< system end indication>

Product Features

- Bio-feedback Function

“A function to indicate a left/right muscular strength by % when in active exercise”

- After passive exercise, get started active exercise by user's strength
- Screen is changed to exercise mode automatically
- User's left & right muscular strength is indicated by %
- Once stop active exercise, screen is changed to passive mode automatically

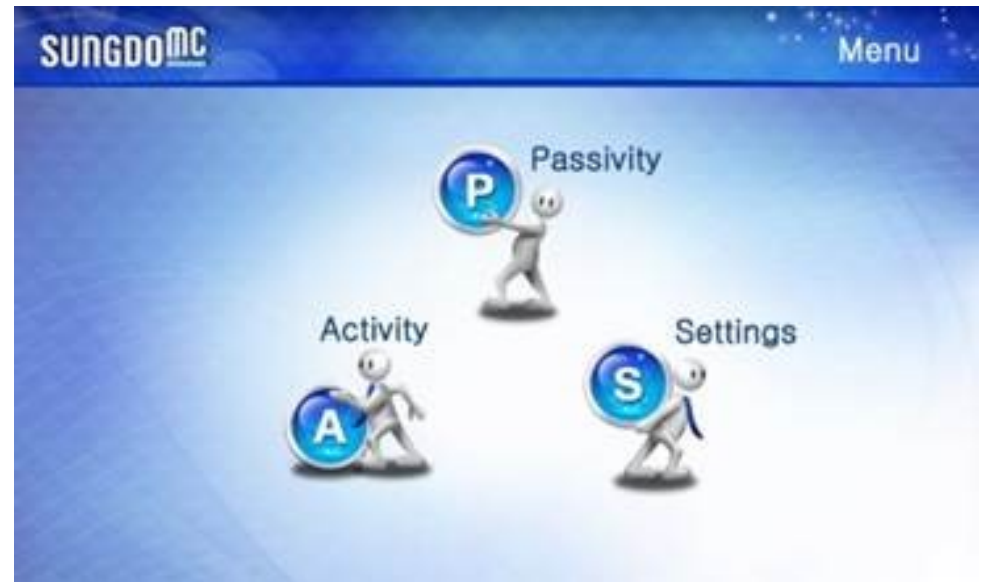


Product Features

- Voice Guide Function

“A function to guide by voice when get started exercise, stop exercise, and abnormality happens”

- Guides by voice to minimize a mistake of the user and use the instrument safely (basic set-up)
- Guides by voice when gets started exercise
- Guides by voice when stops exercise
- Guides by voice when spasm happens



Product Features

- Passive Exercise Mode

“A basic mode being seen when gets started first”

- Guides by voice to minimize a mistake of the user and use the instrument safely (basic set-up)
- Speed: Controls exercise speed and control unit is by 1 rpm and set-up range is 4~60 rpm (initial set-up value: 4 rpm)
- Resistance: Controls resistance reacted when converts into active exercise and set-up range is 1~15 step.
- Time: Controls time when in exercise and possible to control up to 1~99 minutes (initial set-up value: 15 minutes)
- Rotation direction: Select exercise by forward, reverse direction (initial set-up value: forward direction)
- Spasm control: A function to control spasm (initial set-up value: spasm control is turned on)
- Leg exercise, arm exercise: Select limbs and start exercise.



Product Features

- Exercise mode Set-up

“A mode that set up to meet with requirement of the user who use rehabilitation exercise instrument”

- Exercise time: Once set up exercise time, automatically set up when in passive exercise
- Spasm sensitivity : Set up strength of the spasm by low, medium, high state
- Spasm control: Set up as a forward direction, reverse direction, opposite direction so as to release spasm when spasm happens
- Motor power: Set up power of the motor by weak, medium, strong
- Screen brightness: Set up brightness of the screen up to 1~10



Product Features

- Workout Data

“A function that automatically shows a workout result ”

- Duration: Indicates by minute, second unit

- Distance: Indicates by km unit (or mile unit)

- Number of the spasm during exercise:

Indicates until 3 times only

- Active exercise rate: Indicates through calculation of

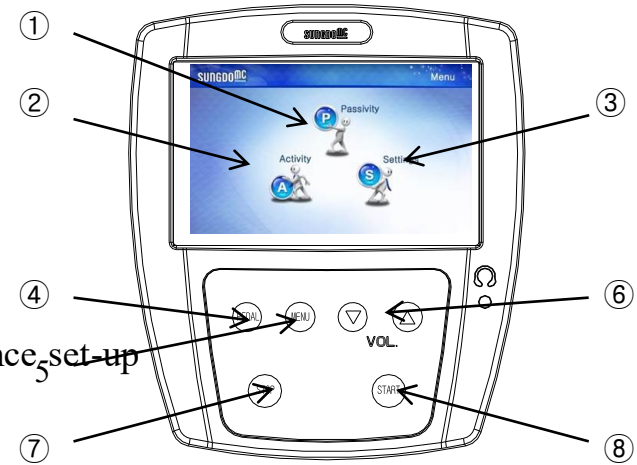
$(\text{active exercise} / \text{passive exercise}) \times 100\%$

- Left & Right Rate : indicates the total exercise involved amount of left & right side limbs by %.



Monitor(LCD Touch Screen, Segment) Detailed Name

- ① Passive Mode : Passive exercise mode
- ② Active Mode : Active exercise mode
- ③ Setting Mode : Program setting mode
- ④ Pedal position adjustment button
- ⑤ Menu button: Return to the initial screen
- ⑥ Volume button: Sound volume control and active mode resistance set-up
- ⑦ Stop button
- ⑧ Start button



Applies SP-1100, 2100, 3100, 1100P, 2100P

SUNGDO MC CO., LTD.

17, Gunjacheon-ro 31beon-gil,

Siheung-si, Gyeonggi-do, Korea 1502

T. +82-32-672-1381 F. +82-32-672-1382

E-Mail : inform@sungdomc.co.kr

<http://www.sungdomc.co.kr>



Applies SP-1100E, 2100E, 3100E, 1100PE, 2100PE